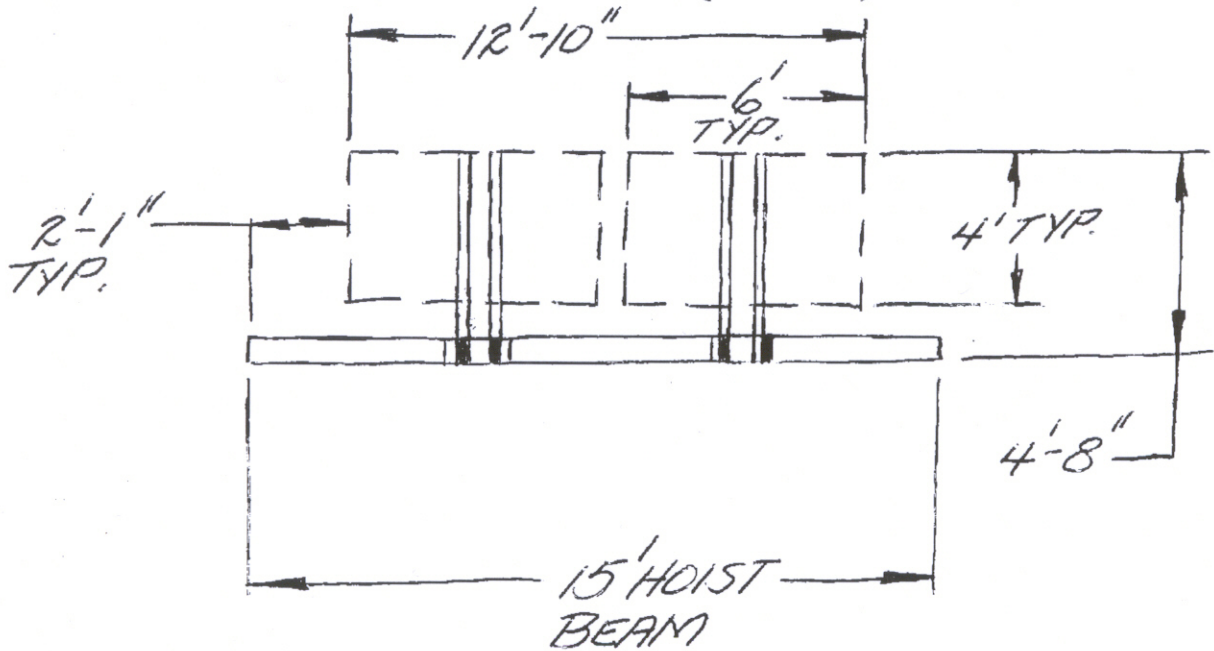


PAY 1014 & 1014.1

5-19-04

WATSON-POWER PAYOFF "FLYER TYPE"
560MM REELS
7 POSITION (4 & 3)



1- UNIT MOD. # PSF 560
MACH. # K-512 (10'-3 OAH)

1- UNIT MOD. # PSF 560
MACH. # K-440-2 (9'-3 OAH)

KW REQUIREMENTS - PAYOFF MOTORS

25 WATTS X 7 = 175W = 1/4 HP

- CHAIN HOIST

1/2 TON (WRIGHT WAY)

1/4 HP, 115/230 VOLTS - 1/4 HP

D. ~~Amir~~ 5/20/04

1/2 HP. TOTAL